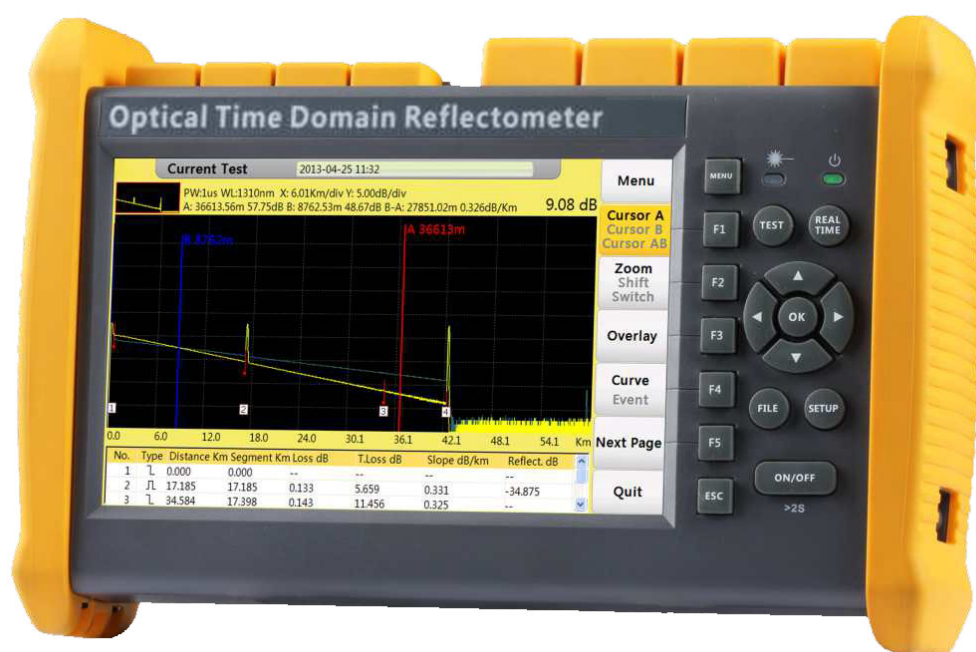


Optical Time Domain Reflectometer (OTDR)

CF5000 Series



Features

- Integrated design ,smart and rugged.
- Small and light ,easy to carry.
- 1625nm online test module with filter is available as an option for online FTTx/PON detection.
- Multi-measuring mode, simple to use,finish measurement by just one button.
- Realtime measuring function, convenient to monitor the splicing process.
- Internal large power visual laser source for accurate positioning the closer fault point.
- **Internal -5dBm stable laser source** (optional in S38F).
- **Optical power meter** included (optional in S38F).
- **Touch screen** function included (optional in S38F).
- Warning function could prevent OTDR module from being damaged by optical signal in fiber.
- Integrated with 2 main USB and one sub USB port, for connecting with external USB memory or PC.
- Integrated with screenshot function.
- PC remote access and control function is available via RJ45 interface or the optional WIFI module.
- Support multi-language display and input,friendly interface,visual keyboard capable.
- Integrated with 4GB internal memory, more than 40,000 groups curve storage.
- Provide data simulation software to process, generate and print report.
- Optional digital fiberscope to inspect connectors.
- Long working hours for outdoor operation.





Ordering Information

Type	Testing wavelength	Dynamic range	Event/Attenuation dead-zone
AD5000-MD21	850/1300 1310/1550nm	19/21 35/33 dB	0.8/4m 1/4m
AD5000-MD22	850/1300 1310/1550nm	19/21 40/38 dB	0.8/4m 1/4m
AD5000-D40	1310/1550nm	40/38dB	1/4m
AD5000-D43	1310/1550nm	43/41dB	1/5m
AD5000-T40F	1310/1550/1625nm ("F" means with filter)	40/38/38dB	1/4m
AD5000-S38F	1625nm ("F" means with filter)	38dB	1/5m

Specification

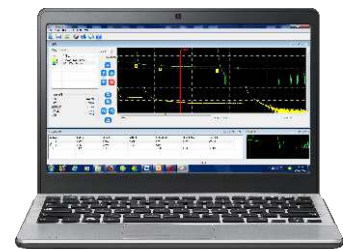
Pulse width	3ns, 5ns, 10ns, 20ns, 50ns, 100ns, 200ns, 500ns, 1μs, 2μs, 5μs, 10μs, 20μs
Distance range	Dead zone test, 500m, 2km, 5km, 10km, 20km, 40km, 80km, 120km, 160km, 240km
Sampling resolution	Minimum 0.25m
Sampling point	Maximum 128,000 points
Linearity	≤0.05dB/dB
Loss threshold	0.01dB
Loss resolution	0.001dB
Distance resolution	0.01m
Distance accuracy	± (1m+measuring distance×3×10 ⁻⁵ +sampling resolution)
Internal visual source	10mW, CW/2Hz
Stable laser source	-5dBm
Data storage	40,000 groups of curve
Interface	1×RJ-45 port, 3×USB port (Type A×2, Type B×1)
Display	7 inch TFT-LCD (touch screen function is optional in S38F)
Battery	7.4V/4.4Ah lithium battery (with aviation certification) , continuous 6 hours working
Working Temp.	-10°C~ +50°C
Storage Temp.	-20°C~ +70°C
Humidity	≤95% (non-dew)
Dimension	253×168×73.5mm / 1.5kg (battery included)
Accessories	Main unit, 12V power adapter, Lithium battery, FC adapter, Wrist belt, USB cord, User guide, CD disk, Carrying case
Optional parts	SC, ST, LC adapter, Bare fiber adapter



Front view



Top view



Interface of simulation software