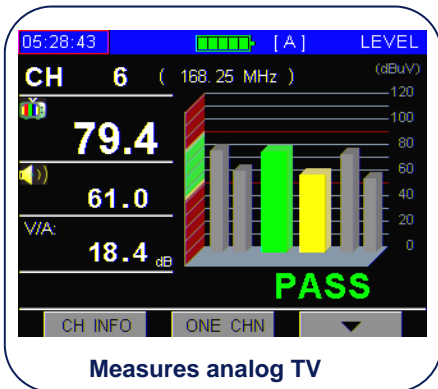




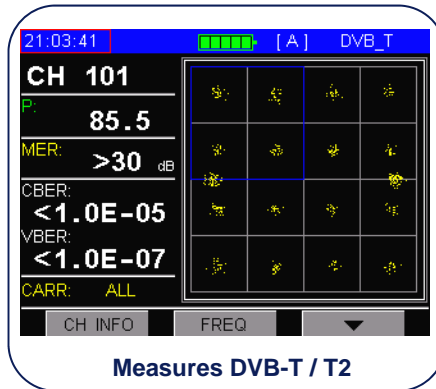
995 €+IVA



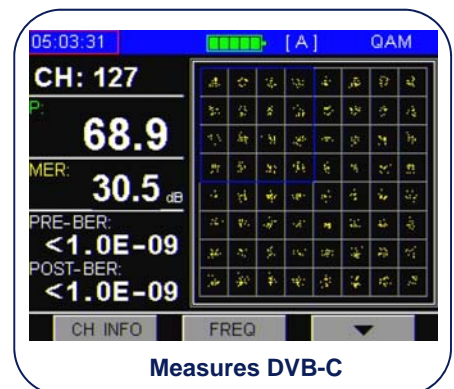
- Complete measures DVB-T/T2 , DVB-C and Analog TV.
- Analysis DVB-C annex A, B y C hasta 256 QAM con estadísticas de BER.
- Spectrum analyzer Analysis SPAN and escales dB/div. configurables.
- Analysis of return channel from 5 to 65 MHz.
- QAM, COFDM and QPSK constellation.
- Access to all funtions using simple icons.
- Measure of trunk line to 100 V AC/DC
- 160 mixed channels, 5 channel list.
- Measure of Level, A/V, Power, CBER, VBER, LBER, Pre-BER, Post-BER, TILT, MER.
- Measure of TILT from 4 to 12 channels configurables.
- Battery Li-Ion, 5 hours working, 3 h charge.
- All included; transport bag, charger to car and AC, PC cable and PC software.
- Compact and light; 218 mm x 95 mm x 49 mm, 700 gr. Include battery.



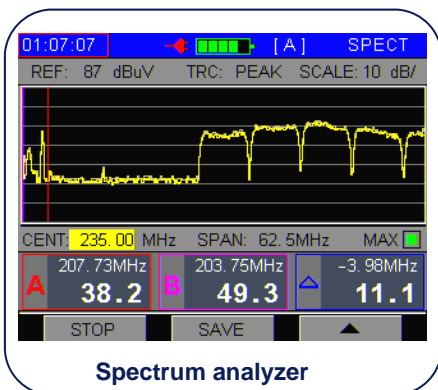
Measures analog TV



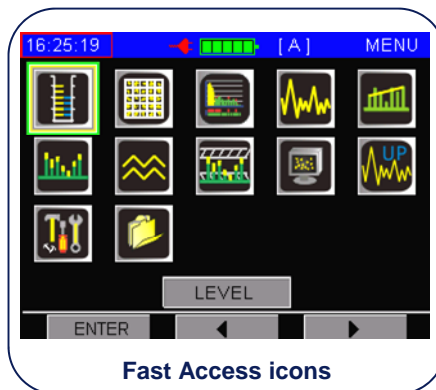
Measures DVB-T / T2



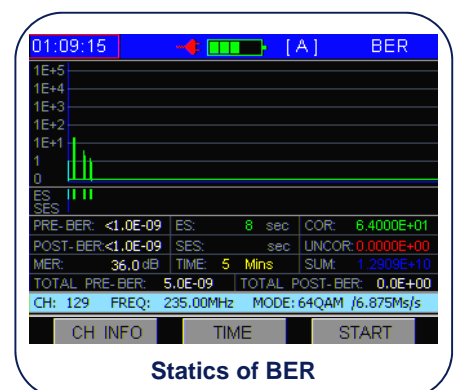
Measures DVB-C



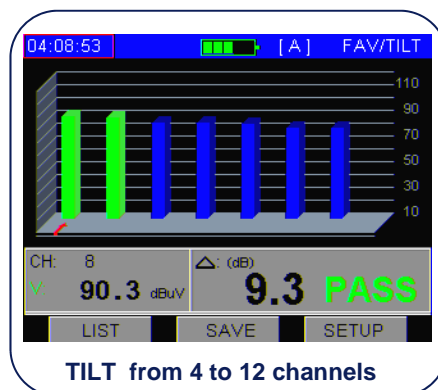
Spectrum analyzer



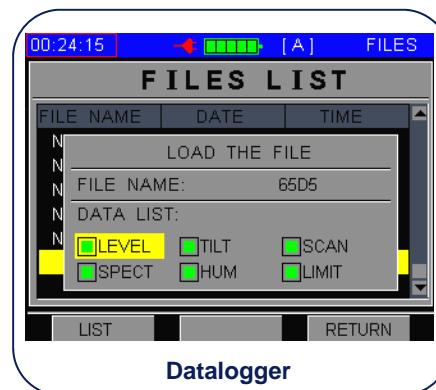
Fast Access icons



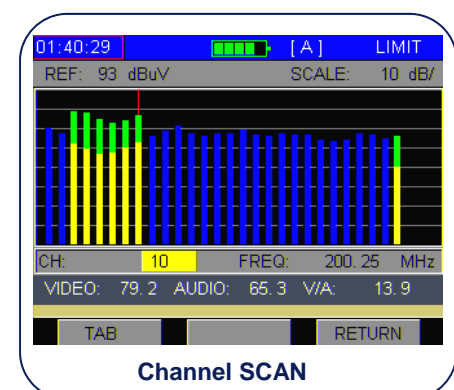
Statics of BER



TILT from 4 to 12 channels



Datalogger



Channel SCAN

ESPECIFICACIONES

Frequencies.	5 MHz ~ 1 GHz		
Display.	Colour (320x234) 3,5"		
Units	dBuV, dBmV and dBm .		
Measures	A/V Level, Power, CBER, VBER, Pre-BER, Post_BER, MER, ECOS, TILD, HUM, MER, V trunk		
Limits	Configurables to Level, Power, CBER, VBER, LBER, Pre-BER, Post-BER MER, HUM and TILD		
Statics of BER	Measures of Pre-BER Total, Post-BER Total, ES, SES, COR, UNCOR and SUM		
Spectrum Analyzer.	Resolución BW Scales	10 KHz 2,5 MHz, 6,25 MHz, 12,5 MHz, 25 MHz, 62,5 MHz, Full spam 1, 2, 5 y 10 dB/div. Selectable	
Channels Scan.	Number of channels Scales Zoom	160 channels, 5 channel list 1, 2, 5 y 10 dB/div. selectable x1, x2, x3, x4 y x5 selectable	
TILT measures.	Number of channels Resolution	From 4 to 12 selectable 0,1 dB	
Trunk line measure.	Range of input Precision/ resolution	From 0V to 100 V AC y DC ± 2V / 0,1 V	
Datalogger	Memory of 512 K, USB to PC cable and software included.		
Dimensions and W.	218 mm x 95 mm x 49 mm, Aprox. 700 gr.		
Power Supply	12.6 V 1.6 AH battery Li, 5 h working, 3 h. change, input from 100 to 230 Vca.		
Accesories	PC Cable, Software PC, Adaptor F, transport case, user manual (CD), AC/DC power supply		
DVB-C		DVB-T	
Modulación	QAM 16/32/64/128 y 256	Power	30 ~100 dBuV (±2 %)
Standars	ITU-T J.83 annex A/ B/ C	MER	~ 30 dB (± 2 dB)
Simbol Rate	1 MS/s ~ 7 MS/s	VBER	1E-3 a 10E-8
BW	6/8 MHz	CBER	1E-2 a 10E-5
Power	30 dBuV a 110 dBuV (±2dB)	Constelación	Total or carrier.
BER	1E-3 a 1E-9	Modulation	QPSK, 16QAM, 64QAM
MER	~ 39 dB (± 2 dB)	TV formats	SD, HDTV, MPEG-2/4, H264
Receptor BW	280 KHz	DVB-T2	
Precisión frequency	±50x10E-6 (20°C±5°C)	Power	25 ~110 dBuV (±2 %)
TV ANALOGICA		MER	> 30 dB (± 2 dB)
Level	30 dBuV to 120 dBuV (±1,5dB)	LBER	1E-3 a 10E-8
Audio carrier	30 dBuV to 120 dBuV (±1,5dB)	CBER	1E-2 a 10E-5
V/A	de 0 to 40 dB (±2dB)	Constellation	Total or carrier.
Input impedance	75 Ω	Modulation	QPSK, 16QAM, 64QAM, 256QAM
HUM	50 o 60 Hz selectable	TV formats	SD, HDTV, MPEG-2/4, H264