



The LVD-17 Adjustable non-contact Voltage Detector is intended to check for the presence of AC voltage, signaling the user with an intermittent tone and a flashing LEO. The LEO flashes periodically to check the battery status.

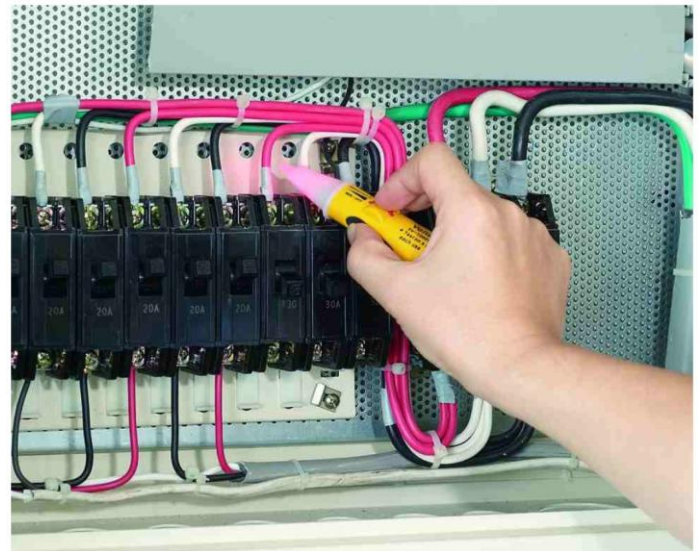
The LVD-17 adjustable non-contact Low Voltage Detector is used to detect voltage in outlets, lighting fixtures, circuit breakers, wires, and cables or to find a break in a wire.

FEATURES

- Designed for non-contact voltage detection. It's safer.
- Microprocessor controlled smart voltage detector.
- Bright LEO and audible alarm sound when voltage is present.
- Sensitivity adjustable with a thumbwheel.
- Adjustable for use on power wiring plus lighting, thermostats and other low voltage circuits.
- LEO indication for battery condition.

SPECIFICATIONS

1. Voltage detection : 5V-1000V AC
2. Frequency : 50-500 Hz
3. Measurement category: CAT IV 1000V
4. Indication : LEO and Tone
5. Operating Conditions
 - a) Temperature : 0-40°C
 - b) Humidity : Less than 80% R.H.Altitude : 2000m maximum
6. For indoor use only.
7. Pollution degree : 2
8. Dimension : 142(L) x 28(W) x 27(0) mm
9. Weight: Approx. 39g(batteries included)
10. Power supply : 1.5V AAA battery x 1



ABACANTO DIGITAL, S.A.

Cra. Fuencarral Km. 15,700, Edif. Europa 1, 1º Alcobendas, Madrid, Spain .
TEL: 0034 91 6613037 FAX: 0034 91 6614917
<http://www.adinstruments.es> e-mail: info@adinstruments.es